



# NEWSLETTER

Number 49

Established 1974

March 1997

## BUCS in Microsoft Windows

BUCS for Microsoft Windows is on its way! This is the second Frey application launched in Windows. The CUBIC utility billing system was the first application.

The Windows product will offer all of the features available in the character version. It will also offer extensions facilitated by a graphical operating environment.

The new BUCS product will follow the *standards* defined for Microsoft Windows. This is an important issue. Many *Windows* products do not follow these standards.

Our conversion plan called for the 1997 updates to be applied to the current character version of BUCS. Once the updates were complete, we would implement the system in a true Windows environment.

Changes for 1997 include:

- Streamlined processing of cash receipts and journal entries
- New income report which includes budget figures
- New Format User Guide with Expanded Features & Graphics

- Graphical display of account history
- Expanded description lines for invoices and journal entries
- New user options for run control totals.

**BUCS: Chart-of-Accounts: Expenses: 10200: View**

File GeneralLedger Payables Receivables FixedAssets Combining-Reports Tools Help

Account Number: 01.4100.0401

Account Descr: COMPUTER SUPPLIES

Combining Num:  Status: ACTIVE

Last Post: 11/01/1994 Prev Post: 11/01/1994

Appropriation		Expenses		Month To Date	Year To Date
Original	.00	Beg Bal		335.23	.00
Rev/Amend	.00	Debits		.00	335.23
Transfers	.00	Credits		.00	.00
Net	.00	Net Dr/Cr		.00	335.23
Unexpended	-335.23	Prior Yr			.00

Encumbrances		Month	Year	Uncommitted
Beg Balance		.00	.00	-335.23
Debits		.00	.00	
Credits		.00	.00	
Net Dr/Cr		.00	.00	

- Year 2000 date compliance. *This was a major change!*
- New processing techniques to eliminate keystrokes.
- Internationalization of BUCS to meet the growing demand for the application
- Other miscellaneous features have been added and reported problems corrected.

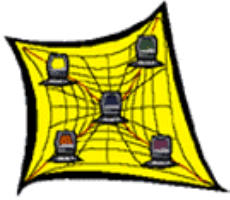
The 1997 changes to the character version were completed in the 4<sup>th</sup> quarter. Work has begun on the Windows implementation. This approach will make the transition to the new system completely *seamless*.

As of February, the general ledger and budget planning modules are complete. Work on accounts payable, encumbrances and cash receipts is underway.

Beta test sites are to be in operation by the second quarter. The full product will be released by August at the 1997 User's Conference. This time has been selected because it will permit conference attendees to receive extensive upgrade training on the new software. Be sure to be there!!!

# <http://www.drfrey.com>

Our World Wide Web site has many new and exciting features. BUCS and CUBIC demonstrations are now available for downloading. A Frey & Company presentation with product overviews is available. The presentations can be run on Windows 3.1, Windows 95 and Windows NT.



We recently had the opportunity to visit England. One afternoon, we passed an Internet Cafe. An Internet Cafe is a coffee house that has computers connected to the Internet. Curious, I had to see what the *Web* was like in Europe. It is about 95% the same as in the US. I logged on, started a search for fund accounting software and immediately found our site. While there, we sent e-mail to friends. I continue to be amazed by the scope and power of the Internet.

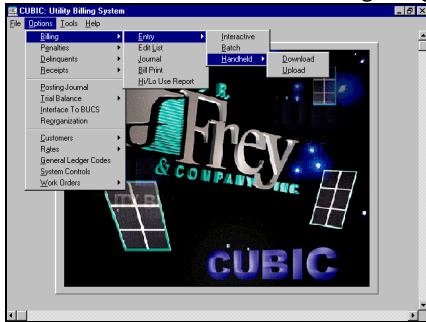
Information about our upcoming user's conference is now available on the site. This will be updated as the agenda "firms up".

Some time ago we wrote an article explaining the difference between fund accounting and commercial accounting. This has become a great hit on the Internet. It is designed to present a simple explanation of the differences. Check it out.

If you haven't visited us on the Internet, please do so. You can find us at: <http://www.drfrey.com>

## CUBIC in Windows Arrives!

CUBIC for Windows is here and getting great reviews! The



system has been completely redesigned utilizing our twenty-plus years of experience. An entire newsletter would be required to detail all of its great features. However, here are just a few:

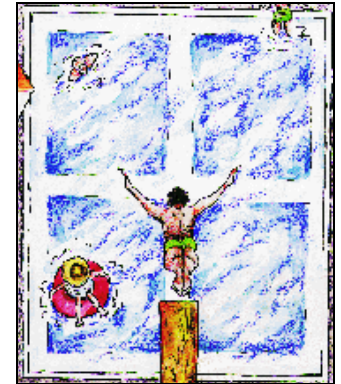
- Full featured True Windows implementation
- Postnet bar coding of bills
- Levelized Billing
- International Features
- Dial Up Reading Interfaces for remote reading
- Multiple hand held reading unit interfaces
- Year 2000 Compliance
- DTI (Date Translation Interface)
- Expanded Account Information
- Unlimited Bill/Payment History
- Unlimited Consumption History
- Consumption Graphs
- User Defined Fields
- ODBC (Open Data Base Connectivity)
- Message & Note Alarms

- All Accounting Maintained Separately for each Service
- Full featured Windows 95 & NT on-line Help
- New User Guides Extensively Illustrated

This system has been designed to be extremely fast! Those time consuming processes like billing entry and cash receipts have been optimized for speed and efficiency. And if you don't like to use a *mouse*, you don't have to! If you want a super utility billing system, you'll want CUBIC!

## User Conference, August 10 - 12

This year's conference will be held at the Commonwealth Hilton Hotel located near the Northern Kentucky Greater Cincinnati International Airport. The theme for this year is *Diving Into Windows*.



The BUCS fund accounting system will make its Windows debut when released for Windows 95 and Windows NT. Sessions will cover improvements to the character and Windows versions of BUCS. Additional time will be devoted to detailing the features and operation of the Windows product.

CUBIC, released for Windows late in 1996 will be featured too. CUBIC underwent a major redesign and rewrite to take advantage of our twenty-plus years of experience and the new technology that has recently become available.

ODBC (Open Data Base Connectivity) will be presented. This is a new capability that will be offered for all Frey software running in a Windows environment. Programs equipped with ODBC capability can access files with those definitions. The programs include Microsoft Office products like EXCEL and WORD. Other leading vendors also offer this capability. Crystal Reports is one of them.

Crystal Reports is one of the most popular programs of this type available today. It is our recommended query/reporting tool. Its capabilities will be presented to provide everyone with an insight into some of the powerful software that is available with our new systems.

All work and no play makes for a dull conference. We won't let that happen! This year, we will stage our evening event at the Cincinnati Museum Center's Natural History Museum. There, we will contrast our high tech daytime sessions with the caves and glaciers of the Ice Age.

Mark your calendar and make your reservations. This is going to be a **major** conference and will fill to capacity quickly.

## Turbochargers For LANs

Two performance enhancement products have become available. These would be valuable for users who have large data volumes and/or numerous users. One is



called AcuServer™. It is available for UNIX, Windows NT (Intel) and Windows 95 networks. The other is called Cobol-RPC™.

AcuServer addresses network file systems that often exact steep penalties on file access. It is not uncommon for network overhead to add fivefold, or more, to the time required to complete a common file action. AcuServer can minimize network overhead. The software can handle an unlimited number of clients or servers on the network (each server requires a separate license).

Cobol-RPC permits selected processes to be run on the *server* rather than the *client*. This feature is very valuable to those running on networks like Microsoft NT. This capability would be very helpful on Novell. Unfortunately, Novell won't allow such processes, at present. Programs benefiting from this capability are those that perform mass updates or major reporting. Examples would be trial-balance reports, penalty billing, data analysis. Some program changes are required to take advantage of this capability.

With the growing number of networks being deployed, these products can be very valuable. The performance improvement will vary depending on the platform and the application. However, we will be running some tests on the CUBIC application to see what improvements one might realize. ☐

## Crystal Reports/Query

Crystal Reports is a leading query/reporting tool for creating presentation-quality, information-rich reports. Ideal for a Windows environment, it accesses a wide range of PC, SQL, ODBC-compliant, groupware and Microsoft BackOffice data sources. Frey & Company will be offering Crystal Reports via an ODBC gateway to Frey applications. Below are some of the prominent features found in Crystal Reports.

- Easy report design using Report Experts or more than 100 pre-defined report templates
- Presentation quality output
- Integrated graphing and cross-tabs
- Unlimited types of reports including sub-reports, unconditional reports, form letters and more
- Powerful data manipulating capabilities
- Export reports to over twenty file formats
- Publish reports to HTML for distribution across the World Wide Web

Crystal's capabilities will be demonstrated at the user's conference using BUCS and CUBIC databases. ☐

## Frey & Company Installs Windows NT Client/Server System

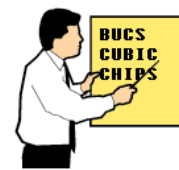
We recently added a Windows NT 4.0 Client/Server to our in-house development systems. We decided to add the system because of the growing number of customers moving to that platform. When we gain sufficient experience, we will comment on the system in the newsletter.

Currently, we have a collection of systems running MSDOS, Windows 3.1, Windows 95 and SCO XENIX. We are also running a Windows 95 peer-to-peer local area network. The diversity of these systems helps us to maintain a better understanding of the advantages and pitfalls associated with various platforms. ☐

## Mike's Tips

By Mike Emmerich

Microsoft Windows 95 users: Set your screen saver to 30



minutes or greater. The default is about 5 minutes. When the screen saver comes on, you hit a key to return to windows. This causes your application to be placed in a box on the Windows menu bar. Many people overlook this. They then attempt the application again. This causes you to start up a second session of the application which can cause the *Maximum Number of Users* message to appear. ☐

## Customers

**California:** *Southlake Water Company:* CUBIC **Florida:** Frey & Company has a substantial base of clients in Florida, particularly in county government. Recently, clients have expanded from the Tax Collectors and Property Appraisers to include Board of Elections and Sheriff's Departments. *Commercial Group, Inc.:* CUBIC; *Osceola County Sheriff's Office:* BUCS; *St. Lucie County Tax Collector:* BUCS, CHIPS; *St. Lucie County Board of Elections:* BUCS; *Silver Springs Regional Water & Sewer, Inc.:* CUBIC **Indiana:** *Town & Country Utilities, Inc.:* CUBIC, BUCS; *Valparaiso Lakes Area Conservancy District:* CHIPS; **Kentucky:** *City of Alexandria:* BUCS; *City of Falmouth:* BUCS, CHIPS, CUBIC; **Mississippi:** *Catholic Diocese of Jackson:* BUCS, CHIPS; **Ohio:** *IBEW 212:* CHIPS; *Village of Manchester:* BUCS; CHIPS; *Village of New Albany:* BUCS, CHIPS; *City of Reading:* CUBIC; *City of Silverton:* BUCS, CHIPS; *Village of Verona:* BUCS, CHIPS, CUBIC; *Western Joint Ambulance District:* BUCS.

As you can see, we have been busy. From every indication, 1997 will be a banner year. Domestic activity is very intense, especially with the release of Windows products. International activities are also heating up. We are actively working with prospective clients in five foreign countries. ☐

# GOVERNMENT ♦ NONPROFIT ♦ UTILITIES

## Fund Accounting, Payroll, Utility Billing

**ESTABLISHED**, in 1974 with installations throughout the U.S. *We understand your business and special needs!*

**EASY TO USE**, Microsoft Windows interface with on-line Help, ODBC and extensive *search* tools. *Programs that make your work easier and more enjoyable!*

**RELIABLE**, withstood the rigors of audits in dozens of states for years, *Problem free accurate programs!*

**ECONOMICAL**, unique pricing model that lets you purchase just what you need. *More value for your money!*

**PORTABLE**, designed for multi-user systems and personal computers. Frey applications run on hundreds of computers and can easily be moved from one to another. *Freedom of choice for you!*

**ADAPTABLE**, programs that can grow with your needs! Our annual updates keep your programs tuned to the latest in technology. *Software that is always state-of-the-art!*

**SUPPORT**, help when you need it! Anywhere! A **Free** 800 number for your convenience. *Support you can swear by, not at!*

**INTEGRATED**, applications that talk to each other. ODBC and Crystal Reports allow you to easily transfer data from Frey packages to spreadsheet, word processor and other application systems. *A team approach to your needs!*

**SPECIAL SERVICES**, custom designed modifications; full range of computer related consulting services. *Professionalism and competence on which you can rely!*

<b>Call Toll Free</b>	<b>1-800-659-3739</b>
<b>Internet</b>	<b><a href="http://www.drfrey.com">http://www.drfrey.com</a></b>
<b>e-mail</b>	<b><a href="mailto:drfrey@drfrey.com">drfrey@drfrey.com</a></b>

## NEWSLETTER

### IN THIS ISSUE:

**BUCS in Microsoft Windows**

**CUBIC in Windows Arrives!**

**Internet: Demos, New Features**

**New! Crystal Reports/Query**

**Turbochargers for LANs**

**1997 User's Conference Set**

**Mike's Tips...**